

# Power Supplies

## DC to DC Converters

### Single Output for LCD

## CE-070 Series

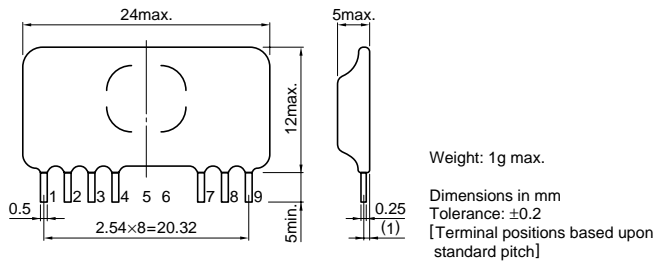
### FEATURES

- These DC to DC converters are small-footprint SIP products.
- Overcurrent protection function.
- Highly reliable due to molded plastic construction.

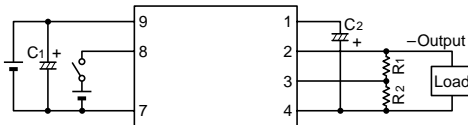
### APPLICATIONS

Bias for liquid crystal display panel

### SHAPES AND DIMENSIONS



### CIRCUIT DIAGRAM



C1: 100 $\mu$ F, 16V

C2: 47 $\mu$ F, 35V

- A ripple current of over 100mA should be used.
- Output voltage can be changed by connection of R1 or R2.

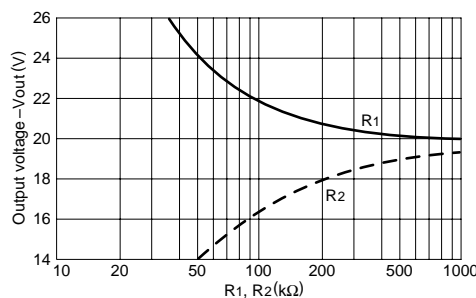
### ELECTRICAL CHARACTERISTICS

Part No.	Input voltage Edc(V)	Output voltage (V)	Output current (mA)	Output voltage stability(%) typ.			Output ripple Ep-p(mV)max.	OFF consumption current (mA)max.	Efficiency (%)min.
				Input	Load	Temperature*			
CE-0700	+5 $\pm$ 0.5	-20	30	1	0.5	0.05	200	0.5	70
CE-0702	+5 $\pm$ 0.5	-24	25	1	0.5	0.04	200	0.5	70
CE-0701	+12 $\pm$ 2	-20	30	1	0.5	0.05	200	0.5	75
CE-0703	+12 $\pm$ 2	-24	25	1	0.5	0.04	200	0.5	75

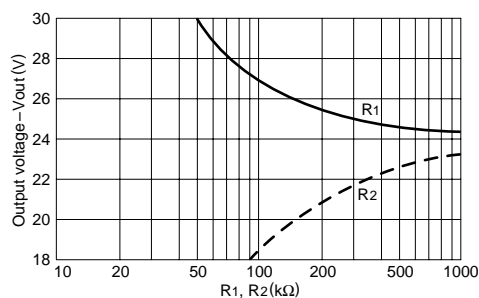
\* Variation value per 1°C.

### OUTPUT VOLTAGE VARIABLE CHARACTERISTICS

CE-0700, CE-0701



CE-0702, CE-0703



### PRECAUTIONS

- A fuse should be connected to the input with a current rating 3 times that of the standard(normal) input current.

### TEMPERATURE AND HUMIDITY RANGES

Temperature range	Operating	-10 to +60°C
	Storage	-30 to +85°C
Humidity range	90(%)RH max. [Maximum wet-bulb temperature:38°C]	

### TERMINAL CONNECTIONS

No.1	Filter	Output capacitor connection
No.2	Vout	Output
No.3	Vset	Output voltage control
No.4	GND	GND
No.7	Vin(-)	Input(-)
No.8	Control	ON-OFF control
No.9	Vin(+)	Input(+)

- Output is OFF when the control voltage level H is within the 1.5 to 6V.
- Output is ON when the control voltage level L is 0 to 0.5V, or control is open.
- Terminal No.4 and No.7 are connected internally.

