

# RF HYBRID LINEARIZERS TL9003

Available as: TNL9003, 4 Pin Surface Mount (SM3)  
FPL9003, 4 Pin Flatpack (FP4)  
BXL9003, Connectorized Housing (H1)

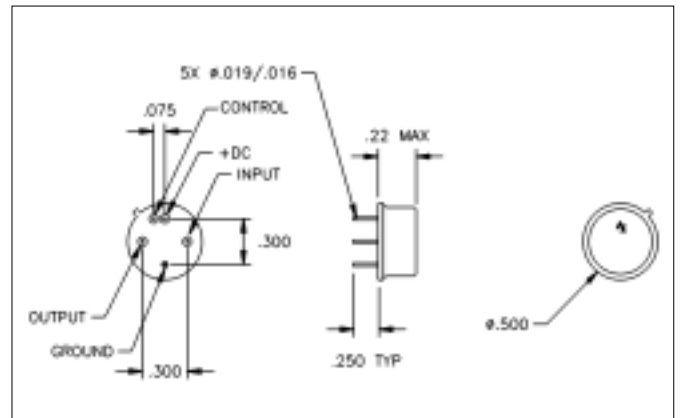
## Features

- 10-1000 MHz Linearizer for TG9001
- 2.5 dB Change Per Control Volt.
- Specifications Guaranteed
- 5 Pin TO-8 Metal Hermetic Package
- Operating Temp. -55 °C to + 100 °C

## Specifications

10 - 1000 MHz

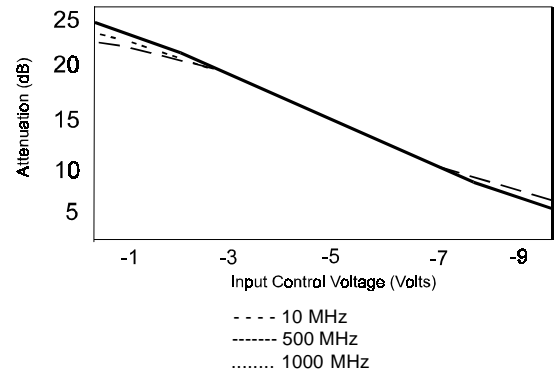
LINEARITY	TYP	MAX
3 - 20 dB	< + 1 dB	< + 2 dB



## TYPICAL POWER TL9003

	Max Attn.	Min Attn.
<b>POWER SUPPLY</b>	Vcon = -1	Vcon = -10
+ 15 Vdc + 1%	4 mA	6 mA
- 15 Vdc + 1%	4 mA	7 mA
Vcon	2 mA	3 mA

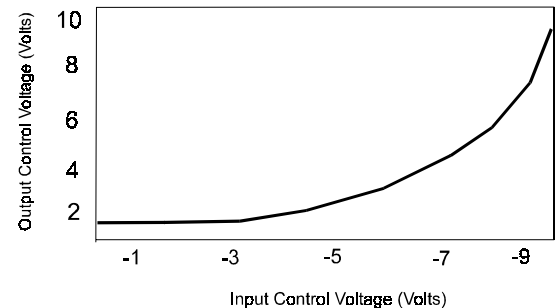
Attenuation TG9001, TG9003 vs. Input Control Voltage



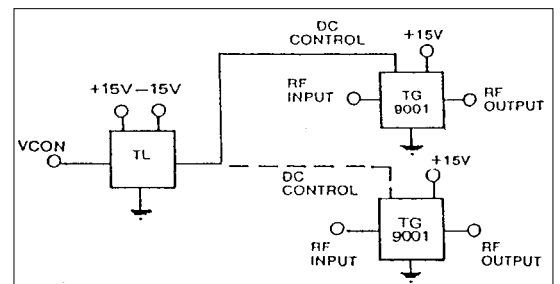
## TYP. POWER TL9003 & TG9001 CASCADED

	Max Attn.	Min Attn.
<b>POWER SUPPLY</b>	Vcon = -1	Vcon = -10
+ 15 Vdc + 1%	10 mA	16 mA
- 15 Vdc + 1%	4 mA	7 mA
Vcon	2 mA	3 mA

Output Control Voltage vs. Input Voltage



Note: Care should always be taken to effectively ground the case of each unit.



# Amplifonix

2707 Black Lake Place, Philadelphia, PA 19154

TEL 215-464-4000 •••• FAX 215-464-4001